

More Human

Lars Jansson

Arr: Jonas Mollberg

Jazz Ballad

Play melody in seventh position.

Guitar 1

Guitar 2

Guitar 3

Bass

Chords: G(add9) 3 020, D/F# 1 024, Em, G/B 1 034, C(add9) 2 030, A(add9)/C# 3 100, D(sus4), D

5

Guitar 2

Guitar 3

Bass

Chords: G(add9), D/F#, Em, G/B, C(add9), F#m11 1 230, B7 2130

9

3 4 3 1 1 3 1 1 1 4 2

Em Em/D Em/C# Cm7 Bm7 Em Bb9 Am7 G/B

2000 3 5 7 9 8fr 7fr 1023 3 1 034

14

D.C. al Coda

C(add9) D G Cm/G

1 030 x00 2 034 1 032

⊕

More Human

Guitar 1

Lars Jansson

Arr: Jonas Mollberg

Jazz Ballad Play melody in seventh position.

D.C. al Coda

Guitar 2

More Human

Lars Jansson

Arr: Jonas Mollberg

Jazz Ballad

Chord diagrams: G(add9) (3 020), D/F# (1 024), Em (3 020), G/B (1 034), C(add9) (2 030), A(add9)/C# (3 100), D(sus4), D.

Musical notation for measures 1-4, featuring a treble clef, a key signature of one sharp (F#), and a 4/4 time signature. The melody consists of eighth and quarter notes.

Chord diagrams: G(add9), D/F#, Em, G/B, C(add9), F#m11 (1 230), B7 (2130).

Musical notation for measures 5-8, continuing the melody with eighth and quarter notes.

Chord diagrams: Em (2000), Em/D, Em/C# (3 5 7 9), Cm7 (8fr), Bm7 (7fr), Em, Bb9 (1023).

Musical notation for measures 9-12, including a measure with a double bar line and a repeat sign.

Chord diagrams: Am7 (3), G/B (1 034), C(add9) (1 030), D (xx0).

Musical notation for measures 13-14, including a measure with a double bar line and a repeat sign.

Chord diagrams: G (2 034), Cm/G (1 032), D.C. al Coda.

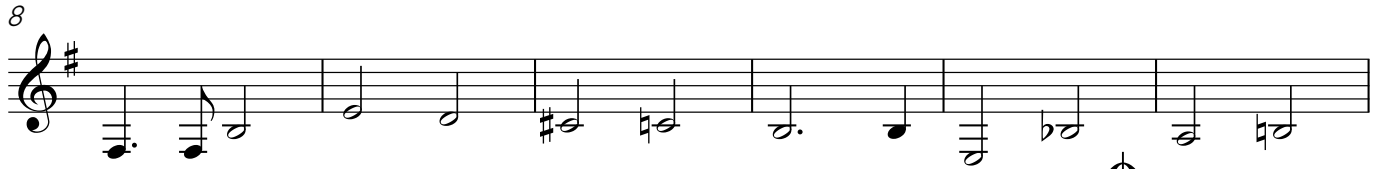
Musical notation for measures 15-16, ending with a double bar line and a repeat sign. A Coda symbol is shown to the right.

More Human

Guitar 3

Lars Jansson
Arr: Jonas Mollberg

Jazz Ballad



D.C. al Coda



More Human

Bass

Lars Jansson
Arr: Jonas Mollberg

Jazz Ballad



8



14

D.C. al Coda

